



CREATIVE

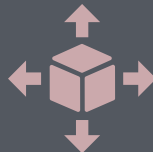
Practice Area

Education in Conflict



STRATEGY

The unique needs of educational systems are first identified, then communities are engaged to establish safe environments for learning and healing; a holistic approach that extends beyond the classroom.



DIFFERENTIAL

Creative's experts utilize education to support the transition from crisis to stability by redressing inequities, modeling new behaviors in educational governance and laying a foundation for a better future.

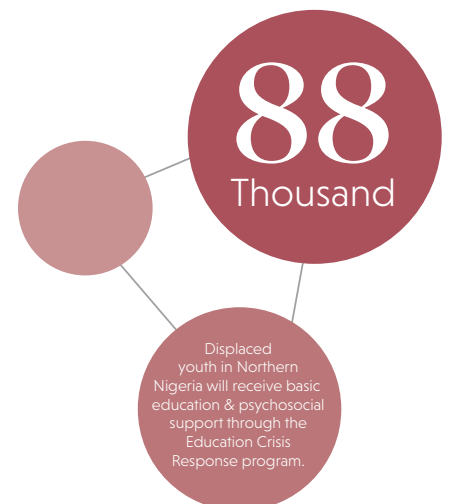


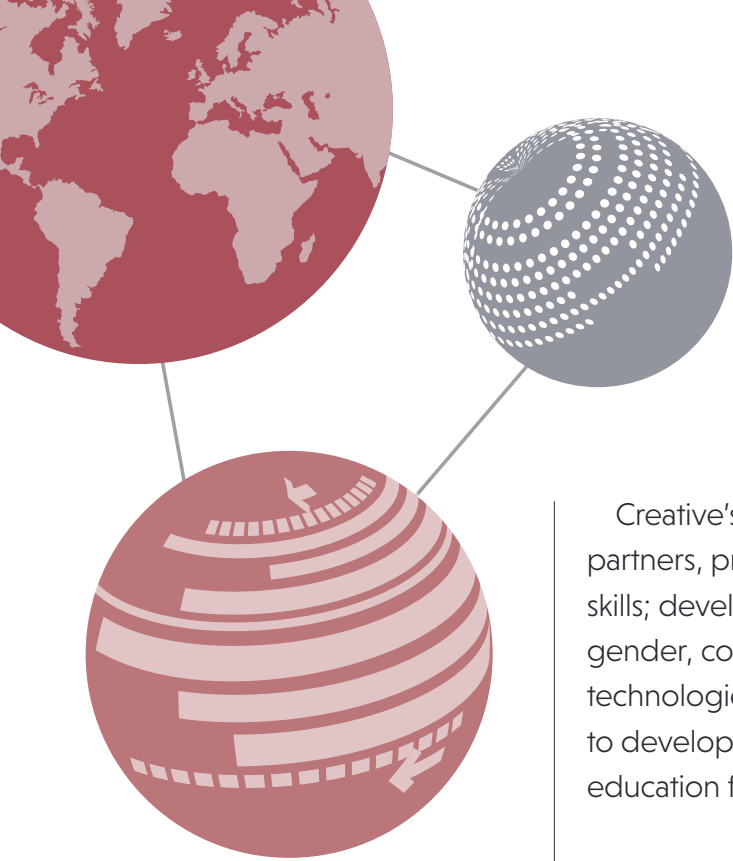
GLOBAL RESULTS

Creative has ensured access to quality education for students in conflict-ridden settings with significant improvements in countries such as Afghanistan, Nigeria, and Pakistan.

Delivering quality education amidst conflict helps students progress and communities heal.

Education plays a vital role in rebuilding conflict-affected communities as they prepare for a peaceful future. Creative Associates International's strategy identifies the unique needs of educational systems and engages communities to establish secure environments conducive to learning and healing.





Creative's experts work with a network of international and local partners, private sector and government officials to elevate teachers' skills; develop teaching materials that emphasize literacy and numeracy, gender, conflict sensitivity and social emotional learning; and introduce technologies that increase access. Creative supports local governments to develop policies that promote equitable, quality and inclusive education for all students.

A conflict-sensitive approach

Creative's conflict-sensitive approach starts with a robust analysis of the context to gain an understanding of the factors that influence the relationship between conflict and education.

Working closely with the community and local government, Creative develops conflict and context-sensitive interventions that promote equity and inclusion, mitigate conflict, prioritize participation and leadership and focus on safety and violence prevention.

Programs pay special attention to reintegrating those whose education has been most affected by conflict, namely out-of-school children and youth.

Afghanistan has experienced a decade of transformative development, nonetheless the education sector remains fragile.

Funded by USAID, the five-year Afghan Children Read project is collaborating with the Ministry of Education to build and implement a sustainable, scalable and evidence-based, gender-balanced national early grade reading program, and improving the ability of government officials at all levels to scale up and sustain this model.

By 2020, the Afghan Children Read project will have developed a proven early-grade reading model capable of reaching all children in the country, as well as ensuring that the Ministry of Education can effectively support the curriculum, teachers

and students. The project will improve the reading skills of more than 450,000 children in 1,229 schools in first through third grades, support approximately 10,000 teachers and build Ministry capacity to deliver in additional provinces.

With an emphasis on fostering positive gender norms, the project utilizes a gender-balanced curriculum to support female teachers and girls—those least likely to access quality education.

Across Creative's education in conflict and crisis-affected programs the focus is on students, specifically, increasing their access to and improving the quality of their education. Safety, reintegration and student well-being are also emphasized so that classes resume with a sense of normalcy.

Methods proven worldwide

Creative's successful post-conflict education work began in 1989 in the Yamales Valley of Honduras, near the Nicaraguan border, where education complemented disarmament, demobilization and repatriation of youth combatants and their families into society.

Since then, Creative has carried out critical and robust interventions in more than 25 conflict or crisis-affected countries—most recently projects in Afghanistan, Nigeria, Pakistan and Yemen.

The organization draws on its depth



Creative's projects integrate a gender mainstreaming approach into understanding education challenges, training educators and improving children's reading.



of experience working in conflict-affected communities on a variety of non-education programs, from stabilization and elections to crime and violence prevention.

From teacher training to curriculum to policy development and database design and management, Creative ensures inclusion and supports participation by utilizing conflict mitigation and prevention frameworks.

Creative's technical and logistical support is flexible and responsive—which enables its experts to deliver a wide range of quality education services in high-risk, complex and rapidly changing security environments. In

some conflict-affected areas, Creative offers accelerated learning and specialized curricula in response to local need and context.

Too many students in Pakistan read far below expectations—in part because many teachers were never trained to teach reading.

The USAID-supported Pakistan Reading Project is boosting early grade reading outcomes for 1.3 million first and second grade students by improving classroom learning environments, changing national-level policies and generating community-based support for reading.

All of Creative's programs develop local

partnerships that promote community participation. In this way, Creative benefits from its partners' insights and influence while promoting local ownership and building stakeholder capacity to bolster long-term sustainability.

Building On Past Successes

In Northern Nigeria, less than 30 percent of school-aged children are estimated to have basic literacy and numeracy skills, and many struggle with the consequences of violence and instability that has caused unpredictable population movement.



25

Creative has carried out critical and robust interventions in more than 25 conflict or crisis-affected countries.

“By creating a safe environment for learning and healing, and working with the community to address critical needs, we are achieving significant gains in advancing education in the most sensitive areas.”

- Eileen St. George, Director of Education in Conflict

Funded by USAID, the five-year Nigeria Northern Education Initiative Plus (NEI Plus) program works in Bauchi and Sokoto to improve access to quality education with a focus on reading — especially for girls, orphans and children enrolled in non-traditional schools.

The Initiative builds on Creative’s highly successful Northern Education Initiative, which improved basic education systems in Bauchi and Sokoto by increasing access to quality basic education and social services. The Northern Education Initiative trained more than 12,500 teachers on evidence-based approaches to early grade reading, built a cadre of trainers and school support officers and established teacher

professional learning communities.

The Initiative is collaborating with federal, state and local education authorities to adapt policies, enhance systems and develop tools and procedures to address five key elements common to effective schools: learning, teaching, school management, parental and community participation.

The Initiative reaches more than 500,000 out-of-school children and youth attending 11,000 Non-formal Learning Centers, Adolescent Girls Learning Centers and Youth Learning Centers. It will improve the reading skills of 1.6 million children in first through third grades.

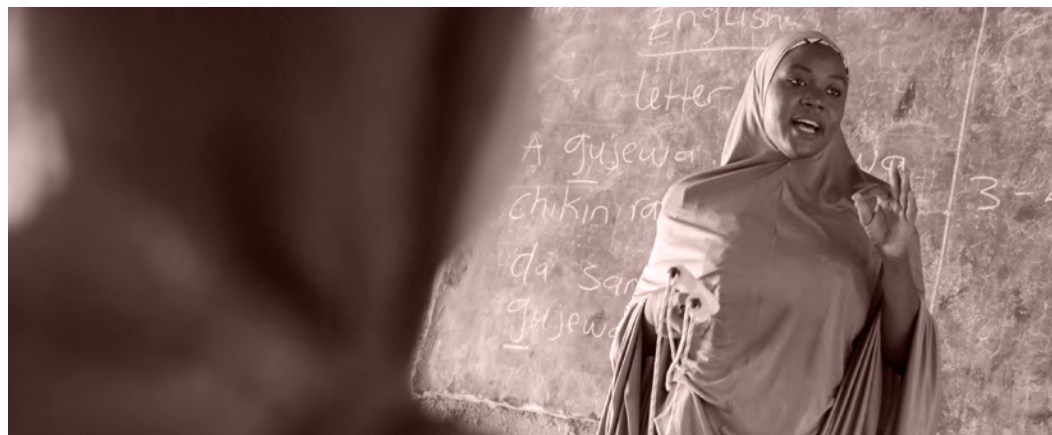
Creative’s USAID-supported, three-year Education Crisis Response project is

increasing access to quality and relevant non-formal education and supporting mainstreaming into formal schooling for some 88,000 internally displaced children and youth ages 6-17. The project provides psychosocial support and social emotional learning through training of its learning facilitators, formal school teachers and community coalitions. Using a specialized curriculum focused on developing social emotional learning competencies enables conflict-affected children to build resilience and achieve learning outcomes.

As these projects continue to strengthen Nigeria’s educational system, they will empower even more teachers and students to reach their full potential.

About Us

Creative Associates International works with underserved communities by sharing expertise and experience in education, economic growth and transitions from conflict to peace. Based in Washington, D.C., Creative has active projects in more than 25 countries. Since 1977, it has worked in more than 90 countries.



Get in touch!

5301 Wisconsin Avenue NW, Suite 700
Washington, DC 20015
+ 202.966.5804



Communications@CreativeDC.com
CreativeAssociatesInternational.com